



ICMI

The Collection

INVERLOCHY CASTLE

HIGHLANDS, SCOTLAND

ICMI LUXURY COLLECTION



ICMI
— *The Collection*



INVERLOCHY CASTLE

THE GRAND HOTEL OF THE SCOTTISH HIGHLANDS

Inverlochy Castle is reflected in its own loch, and backed by Ben Nevis, Britain's highest mountain. The grandeur of this much-awarded historic hotel, with its fine dining restaurant, only adds to the beauty of its dramatic landscape. Queen Victoria, who used the Castle as an escape from running the British Empire, said she "never saw a lovelier or more romantic spot". Today's guest receives an equally royal welcome in the Great Hall, and spends their days walking, relaxing with a matchless selection of limited-release whiskies, or enjoying the fabulous cuisine. It is also the greatest of all bases from which to explore the Highlands.

17 Castle rooms and suites located in the main castle

8 Walled Garden rooms and suites situated in our stunning Victorian Walled Garden

2 bedroom Gate Lodge, for more privacy located at the gates of the hotel

Fine dining restaurant 'Seasgair' or our Shared Dining Experience in our Mary Shaw room (overseen by legendary chef Michel Roux Jr)

Full-sized snooker table

Extensive whisky library

Private loch

Clay pigeon shooting and archery on property, on request

Games room

Stalking, shooting, fishing, pony trekking, skiing, golf & other outdoor pursuits available nearby

Awarded Best Hotel in Europe by Travel & Leisure magazine, 2006

Awarded Best Service in Europe by Travel & Leisure magazine, 2007

Awarded Conde Nast Johansens Best Destination 2014

Conde Nast Readers' Choice Award 2018 – 2nd Top UK Hotel

Travel and Leisure World's Best Awards 2018 – 2nd in Europe, 4th in the World

Awarded 5 AA Stars

✈ Inverness 90 minutes, Glasgow International 2.5 hrs, Edinburgh International 3 hrs

✈ Helipad



Tel: +44 (0)1397 702177
info@inverlochy.co.uk
inverlochycastlehotel.com

CROSSBASKET CASTLE

NEAR GLASGOW

ICMI LUXURY COLLECTION



ICMI
— *The Collection*



CROSSBASKET CASTLE

Opened in 2016 after a sensitive full refurbishment, Crossbasket Castle is the best of both worlds. A traditional Scottish luxury hotel undergoing an exciting £15 million further development, opening 1st August 2024.

Perfect for individual stays, in addition to an outstanding wedding and conference venue.

Glasgow Airport - 30mins

Edinburgh Airport - 45mins

Stirling - 40mins

Currently available at Crossbasket Castle;

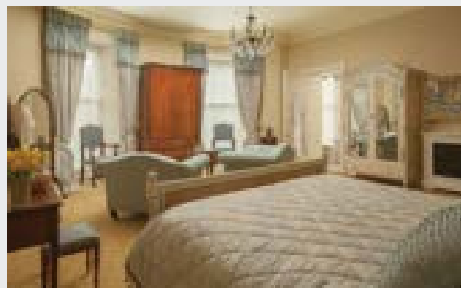
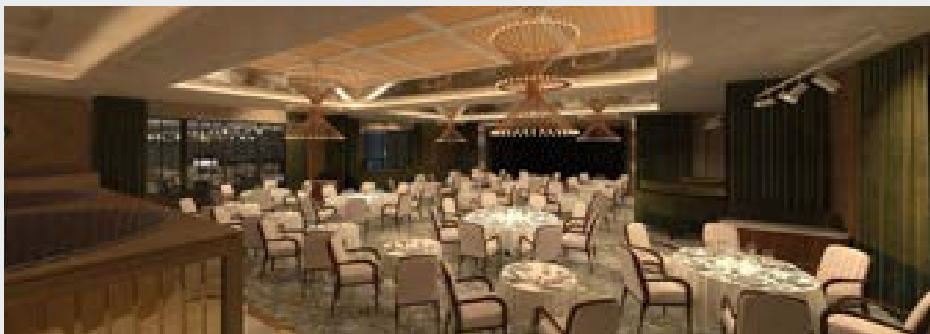
- 9 main castle bedrooms
- 2 bedroom Gate Lodge and 3 bedroom East Lodge both with own sauna, steam room and hot tub
- 'Michel Roux Jr at Crossbasket Castle' restaurant, offering fine dining and the very best of Scottish produce
- Roosevelt Ballroom seating up to 250 guests, ideal for weddings, conferences, special occasions
- James Little Hall for smaller events, conferences and wedding ceremonies, seating 250 for ceremonies and receptions, 120 for dining

Opening 1st August 2024, the exciting new expansion will add:

- 40 new hotel rooms as well as two five-bedroom eco lodges
- 2 Spa Lodges with 3 dedicated treatment rooms in each
- Trocaderos is a 100 cover restaurant with its own cocktail bar, a unique dining experience which incorporates live music, amazing food and exceptional service, the first of its kind in Scotland
- 100 cover Courtyard bar

Whether it is for an idyllic place to stay during a sojourn in Glasgow, a romantic break, the event of a lifetime or one of the best dining experiences in Scotland, Crossbasket Castle, managed by the award winning ICMI team, is the best of all worlds.

Tel: +44 (0)1698 829461
info@crossbasketcastle.com
www.crossbasketcastle.com



Artist Impressions

ISLE OF ERISKA

ARGYLL AND BUTE

ICMI LUXURY COLLECTION



ICMI
— *The Collection*



ISLE OF ERISKA

UNIMAGINABLY BEAUTIFUL HOTEL AND SPA RESORT ON A PRIVATE ISLAND OFF THE WEST COAST OF SCOTLAND

Mountains, islands, lochs, inlets, wilderness: the view from Eriska has it all. This gourmet luxury and spa resort is on its own island, off the west coast of Scotland. You could be at the ends of the earth; yet Eriska is less than two hours by private transfer from Glasgow International Airport. As well as a fine dining restaurant using local ingredients, there is an ESPA spa with steam room, sauna, jacuzzi and 17-metre indoor pool, indoor sports hall and a variety of accommodation with fabulous views.

Eriska offers a number of activities by prior arrangement, including clay pigeon shooting, mountain biking, sailing and watersports. Just walking around this beautiful island on the hiking trails is an adventure in itself. Cuisine is a focus at Eriska, which has its own salmon smokery and kitchen garden; the chefs can often be seen roaming the island foraging for local wild ingredients, from seaweed to herbs. Vistas from all the rooms are spectacular.

16 bedrooms, 2 Spa Suites, 3 Garden Suites, 1 Garden Cottage and 1 Spa Cottage
6 Hilltop Reserves and the 3 bedroom Arnott's House
Famed fine dining restaurant using local ingredients and The Deck offering a lighter option in dining
ESPA spa and 17 metre indoor pool
Mountain biking, sailing and watersports
Easy access to the Highlands



Glasgow International Airport 2 hrs



Glasgow Central train station 2.5 hrs



Helipad – Location dependent on size

Tel: +44 (0)1631 720371
office@eriska-hotel.co.uk
www.eriska-hotel.co.uk



GREYWALLS

NEAR EDINBURGH, SCOTLAND

ICMI LUXURY COLLECTION



ICMI
— *The Collection*



GREYWALLS

ARCHITECTURAL GEM IN GOLFERS' HEAVEN

A short drive from the historic delights of Edinburgh's Royal Mile, Greywalls sits on the edge of the dramatic Firth of Forth sea inlet and beside the world-renowned Muirfield golf course – and a short journey from several other championship courses. Designed by the celebrated Edwardian architect Sir Edwin Lutyens, Greywalls is one of the most notable pieces of architecture in the country, replete with manicured gardens and a close-up view of Muirfield's fairways. Master chef Michel Roux Jr oversees the Chez Roux restaurant, which is a destination in itself for Edinburgh's cognoscenti. The ambience at Greywalls is of a distinguished, sophisticated but relaxed hotel where golf's elite gather to play, plan, and discuss the day's excitement.

23 bedrooms

Next door to Muirfield golf course (access arranged)

Ten golf courses (including four championship courses) within five miles

Formal gardens with extensive seating and strolling areas

Available for exclusive use for weddings, house parties and corporate events

Chez Roux restaurant, overseen by Michel Roux Jr, owner of Le Gavroche, the first UK restaurant to be awarded three Michelin-stars

Awarded 5 AA Stars

Easy access to beaches and castles in the area

A short drive from Edinburgh's historic sights

Sweeping views over the Firth of Forth and Lammermuir Hills



Edinburgh International 30 mins, Glasgow International 1.5 hrs



Helipad

Tel: +44 (0)1620 842144

enquiries@greywalls.co.uk

greywalls.co.uk



ROCPOOL RESERVE

INVERNESS, SCOTLAND

ICMI LUXURY COLLECTION



ICMI

— *The Collection*



ROCPool RESERVE

LUXURY URBAN RETREAT IN THE CAPITAL OF THE HIGHLANDS

Rocpool Reserve is two completely different hotels in one. On the one hand, it is a decadently stylish urban retreat on the edge of Inverness, where you can sip cocktails in the contemporary-chic bar and dine at the hotel's outstanding restaurant, and relax in your on-balcony hot tub. On the other, it is the perfect touring base, situated in the capital of the Highlands, and equally accessible to the whisky country of Speyside, the dramatic national park around Aviemore, and Loch Ness and its many attractions.

The cossetting metropolitan boutique ambience is a striking contrast to the natural wonders a short drive away, and Rocpool is a destination for the traveller who wants both wilderness and contemporary urban creature comforts.

11 bedrooms in four categories: hip, chic, decadent, extra decadent
 Smart TVs, dual cordless phones, Bose Bluetooth speaker and super king size beds in all rooms
 Outstanding restaurant and cocktail bar
 A short drive from Loch Ness, Culloden Battlefield and Fort George
 Exclusive hire for weddings, conferences, entertaining available
 Numerous childrens' activities available nearby including go-karting, quad biking, archery and riding
 Awarded 5 AA Stars



Inverness 20 mins, Edinburgh International 3 hrs



Inverness station 10 mins by car (overnight sleeper service from London)



Tel: +44 (0)1463 240089
info@rocpool.com
rocpool.com

GLENFINNAN HOUSE HOTEL

HIGHLANDS

ICMI LUXURY COLLECTION



ICMI

— *Luxury Collection*



GLENFINNAN HOUSE HOTEL

Located 15 miles from Fort William, the outdoor capital of the UK and home to the highest mountain in the UK, Ben Nevis, Glenfinnan House is situated on a rolling lawn that meets the shore of Loch Shiel with the National Trust for Scotland monument to Prince Charles Edward Stuart (a.k.a. Bonnie Prince Charlie) across the bay.

The house was built as an inn between 1752 and 1755 by Alexander MacDonald VII of Glenaladale who was wounded at Culloden (1746) fighting for Prince Charles Edward Stuart (Bonnie Prince Charlie).

The present owners, came to Glenfinnan in 1971 by which time the house was in an advanced state of disrepair. They converted the house into a hotel whilst attempting to retain as much of its old character as possible. This Scottish country house is a fine stone mansion with attractive public rooms and 14 bedrooms. Along pine-panelled walls hang an atmospheric collection of paintings including an impressive portrayal of the 1745 Jacobite Rising at Glenfinnan.

A 10-minute walk away through the red deer dotted Glenfinnan Estate, is the famous Glenfinnan viaduct railway bridge which was used in scenes from various Harry Potter films and where the Jacobite Steam Train runs twice daily through the summer months.

Ideally located for days trips to Skye, Loch Ness and Oban, yet provides seclusion and a real taste of the Highlands of Scotland, remaining almost untouched for hundreds of years.

14 bedrooms

Dining room serving the best of local produce

Lively bar with traditional local music

Relaxing public rooms full of character and charm

Large outdoor seating area

Glenfinnan House is currently closed and will open May 2024 after undergoing a full refurbishment and managed by the award-winning team at ICML.



Inverness Airport 2 ½ hours



Glasgow International Airport 3 hours



Fort William Train Station 30 mins

Tel: +44 (0)1397 601113

info@glenfinnanhouse.com

www.glenfinnanhouse.com



THE LIMING, BEQUIA

BEQUIA, ST VINCENT AND THE GRENADINES

PART OF THE LIMING & ICMi COLLECTION





THE LIMING, BEQUIA

THE ART OF DOING NOTHING

Opened in November 2018, The Liming is the Caribbean's newest luxury resort, designed to help you discover a new concept of relaxation on the Island in the Clouds, Bequia (Bek-way). Channel pure escapism in our range of meticulously designed one, two and five bedroom villas, with each space gifting exquisite vistas while retaining the privacy afforded by an exclusive Caribbean island. Pour over the sweeping views of the ocean from your private infinity pool, immersing yourself among the colours of the Caribbean by day. When the sun goes down, eat and drink above the Caribbean Sea on our unique sea-top terrace restaurant and tantalise your taste buds with a choice of locally sourced ingredients.

Doing nothing is an art form in Bequia, and it is our philosophy at The Liming. Each decision we have taken has been carefully considered to heighten your state of relaxation, optimising your time with us and leaving you free to indulge in a little nothing.

Whether you are looking for the ultimate romantic honeymoon, taking the family to the most relaxed Caribbean destination, or looking to explore nature with a group of friends, The Liming has accommodation to suit:

5 Two Bedroom Villas
4 One Bedroom Villas
1 Junior Suite
1 Five Bedroom Mansion House

Ocean Restaurant
Manicured Gardens
Individual Private Infinity Pools
Docking Pier

Located in Bequia, St. Vincent & The Grenadines

✈ International Airport – Barbados Grantley Adams International Airport
Domestic Airport – Bequia J. F. Mitchell Airport

Tel: +44 (0)131 297 0289
reservations@thelimingbequia.com
thelimingbequia.com



THE INCH

LOCH NESS, SCOTLAND

ICMI LODGES & INNS COLLECTION



ICMI

— *The Collection*



THE INCH

COUNTRY INN ON THE CENTRAL SHORES OF LOCH NESS

The Inch is situated just outside Fort Augustus, the touring capital of Loch Ness, Scotland's most famous, and biggest, Loch. It has spectacular views over the heart of the Loch and offers a hearty and friendly welcome to individuals, groups and families. Loch Ness cruises and longer boat trips along the Great Glen depart from Fort Augustus, within walking distance from the hotel. Urquhart Castle is a short drive and Ben Nevis, Scotland's highest mountain, is less than a 45 minute drive away.

Located in a fabled spot above Inchnacardoch Bay

A short walk from the centre of Fort Augustus, centre of Loch Ness cruises and activities

17 bedrooms, several with spectacular Loch Ness views

Touring base for Loch Ness and the Great Glen/Caledonian Canal

Restaurant specialising in local produce

Bar with fine malt whisky selection



Inverness 45 minutes



Inverness station 45 minutes by car (overnight sleeper service from London)



Tel: +44 (0)1456 450900
happy@inchhotel.com
inchhotel.com

COLONEL'S HOUSE

NEAR EDINBURGH, SCOTLAND

ICMI LODGES & INNS COLLECTION

ICMI
— *The Collection*





THE COLONEL'S HOUSE

PRIVATE LODGE IN GOLFERS' HEAVEN

The Colonel's House sits in the grounds of Greywalls Hotel and has four bedrooms, sleeping ten, in a private lodge setting. The House is 200 metres from Greywalls itself and can be booked out in its entirety. A short drive from the historic delights of Edinburgh's Royal Mile, Greywalls sits on the edge of the dramatic Firth of Forth sea inlet and beside the world-renowned Muirfield golf course – and a short journey from several other championship courses. Designed by the celebrated Edwardian architect Sir Edwin Lutyens, Greywalls is one of the most notable pieces of architecture in the country, replete with manicured gardens and a close-up view of Muirfield's fairways. Master chef Michel Roux Jr oversees the Chez Roux restaurant, which is a destination in itself for Edinburgh's cognoscenti. The ambience at Greywalls is of a distinguished, sophisticated but relaxed hotel where golf's elite gather to play, plan, and discuss the day's excitement.

Four bedrooms, sleeping 10 in total; available for exclusive use and perfect for golfing parties
Next door to Muirfield golf course (access arranged)

Ten golf courses (including four championship courses) within five miles

Formal gardens with extensive seating and strolling areas, as well as kitchen garden

Use of Greywalls facilities, including Chez Roux restaurant, overseen by Michel Roux Jr, owner of Le Gavroche, the first UK restaurant to be awarded three Michelin-stars

Easy access to beaches and castles in the area

A short drive from Edinburgh's historic sights

Sweeping views over the Firth of Forth and Lammermuir Hills



Tel: +44 (0)1620 698 000
info@thecolonelshouse.co.uk
thecolonelshouse.co.uk

FACTOR'S INN & COTTAGE

SCOTTISH HIGHLANDS

ICMI LODGES & INNS COLLECTION

ICMI
— *The Collection*





FACTOR'S INN AND FACTOR'S COTTAGE GUEST LODGES IN THE GROUNDS OF INVERLOCHY CASTLE

The Factor's Inn and Factor's Cottage are private, room only accommodation within the grounds of Inverlochy Castle, the grandest hotel of the Highlands.

Offering room only, self-serviced accommodation with comfortable guest rooms and free Wifi, The Factor's Inn and Factor's Cottage are ideally located to explore Fort William 'The Outdoor Capital of the UK' and the surrounding Lochaber area.

Overlooked by Britain's highest mountain, Ben Nevis, the surrounding scenery is breathtaking.

The Factor's Inn has four individually let private bedrooms with en-suite bathrooms. Please note, the Inn is room only accommodation, and therefore there is no housekeeping service and no bar or restaurant facilities.

The Factor's Cottage has five individually let private bedrooms with en-suite bathrooms. Again this is room only accommodation with no public areas or housekeeping services.

However, there are many dining options in the nearby town of Fort William located just a short four mile drive or alternatively please do visit www.inverlochycastlehotel.com for various dining options just a short walk from your accommodation.

All our rooms are pet friendly, however, we only accept well behaved pets and a fee is applied at the time of booking.

Clay pigeon shooting or Archery at Inverlochy Castle, on request.

The Highlands of Scotland is famous for its stunning scenery, lochs, mountains, waterfalls and places of historical interest. Factor's Inn and Factor's Cottage are situated in Lochaber, the Outdoor Capital of the UK. Take advantage of our stunning location and experience some of the following exciting activities:

- | | |
|------------------------|------------------------------------------|
| Golf | Mountain Biking |
| Whitewater rafting | 4x4 Off Road Driving |
| Skiing/Snowboarding | Seal Island Cruise |
| Hill Walking | Harry Potter Steam Train |
| Climbing | Nevis Range Gondola |
| Horseriding & Trekking | Day trips to Skye, Glencoe and Loch Ness |
| Hunting & Fishing | |

✈ Inverness 90 minutes, Glasgow International 2.5 hrs, Edinburgh International 3 hrs
 🚁 Helipad

Tel: +44 (0) 1397 520 750
info@factorsinn.com
factorsinn.com



